



KettyBot Pro

Flexible Multitasker





CONTENT

Product Introduction

Company Introduction

Case Study

Customer Value

KettyBot Pro

KettyBot Pro is the delivery-reception-marketing 3-in-1 robot that is capable of performing several tasks – delivering, guiding and promotion at the same time. As a cutting-edge product, KettyBot Pro delivers a state-of-the-art experience in different scenarios.

- Multi-task taking, a wide variety of capabilities
- A minimize clearance of 52cm (in specific situations)
- Walking AD display with 18.5" screen
- Versatile accessories, easy function-extension
- Smart trays detection for seamless delivery

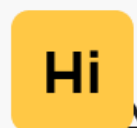




Superior Mobility



Customized Advertisement



Customer Attraction



Greeting & Guiding



AI Voice Interaction



Multiple Delivery Modes



Automatic Recharging

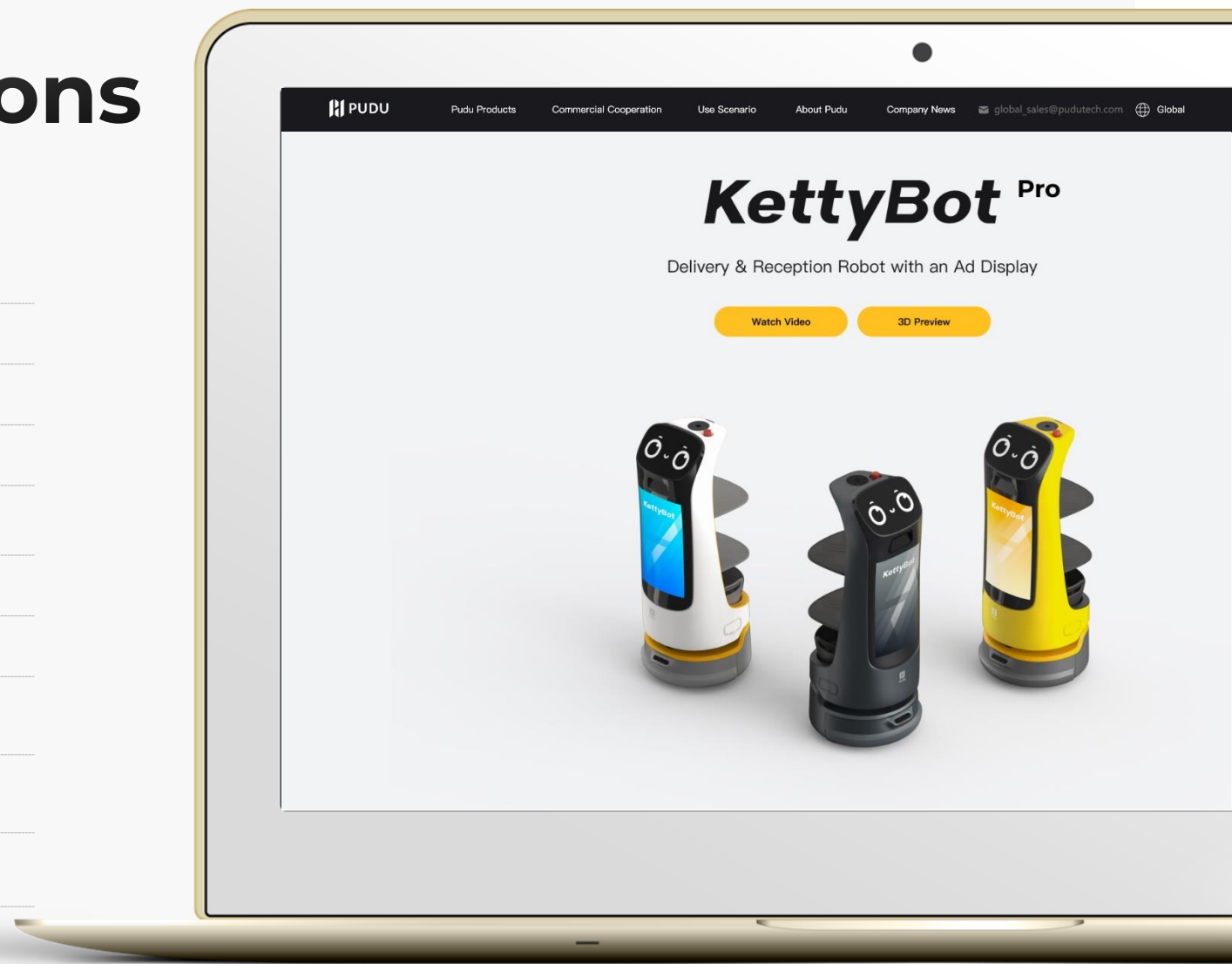


Smart Trays Detection



Product Specifications

Machine Dimension	435*450*1120mm (17.13 * 17.72 * 44.09 in)
Machine Weight	38KG (83.78 lbs)
Loading Capacity	10KG/tray (22.05 lbs/tray)
Battery Capacity	25Ah
Run-time	11h
Cruise Speed	Max 1.2m/s (3.94 ft/s)
Charging Time	4h
Obstacle Negotiation Height	5mm (0.20 in)
Clearance	≥52cm (≥ 20.47 in) (in specific situations)
Climb Angle	≤5°





3D Obstacle Avoidance Sensor

Two sets of RGBD cameras on the neck and the chassis form a 3D obstacle avoidance

Visual Camera

The infrared camera on top of KettyBot Pro provides real-time V-SLAM positioning and navigation

Smart Trays Detection

Equipped with two 360° fisheye lenses, enabling KettyBot Pro to automatically leave after the load is emptied

18.5" Large Ad Screen

In-store marketing with a large ad display

Laser SLAM

Laser SLAM and visual SLAM dual-SLAM solution

Multi-functional Compartment

Two trays and a collecting box cooperate with each other to meet a variety of usage scenarios

Independent Suspension

Auto-level independent linkage suspension system with high-efficiency in bump avoidance

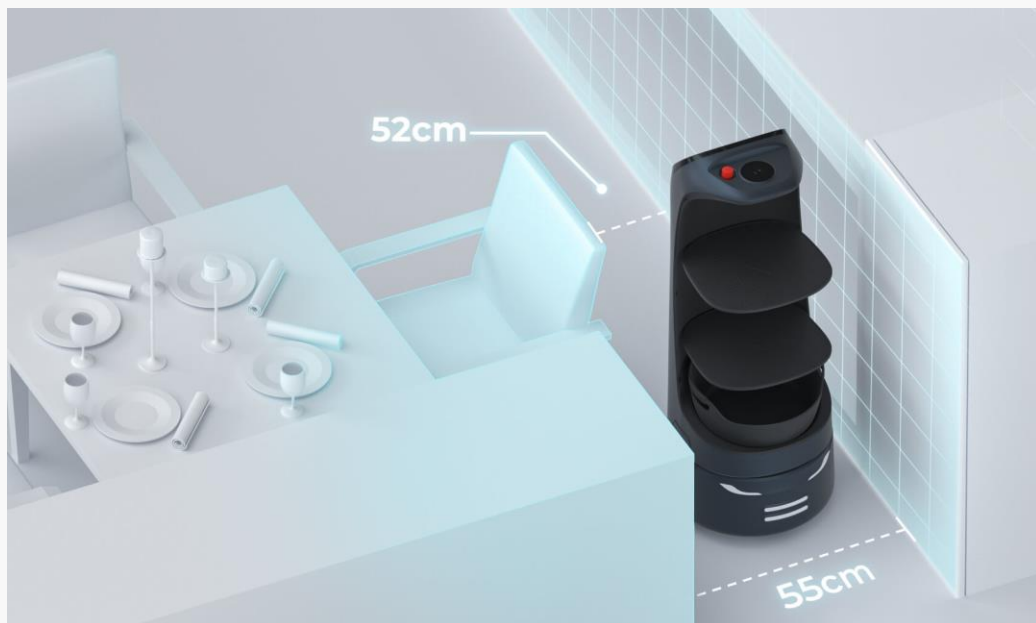
The Removable Rear Cover

KettyBot Pro features two forms enabled by the removable trays and rear cover



Product Introduction

With a minimize clearance at 52 cm*, KettyBot Pro is specially designed for complex and dynamic environments.



- Powered by PUDU advanced SLAM algorithm, KettyBot Pro supports **laser and visual dual SLAM navigation and positioning.**
- 2* RGBD depth camera,
With the latest enhancements to its ultra-wide-angle RGBD camera, KettyBot Pro can capture a wider field of view. This enables it to navigate complex environments more precisely and accurately, resulting in a smoother delivery experience and improved obstacle avoidance capabilities.

* In certain situations, the robot can go through a clearance of only 52cm.

In-store Marketing



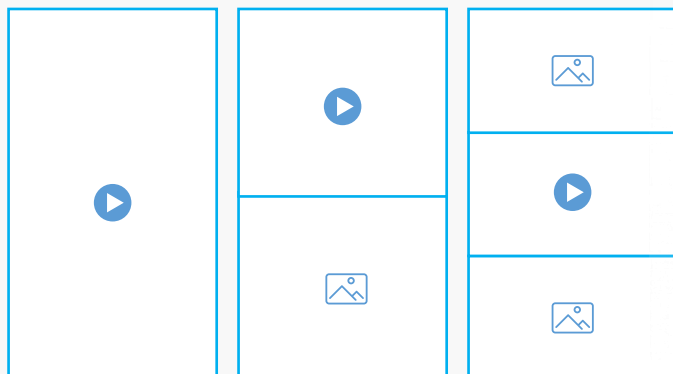
Reach More Customers with 18.5" Large Ad Display

- The 18.5" large ad screen can display promotional video or pictures, providing a more eye-catching approach for marketing.
- Centered ad display perfectly adapts to the customer's angle of view, while maintaining the design aesthetic of the robot.
- KettyBot Pro is not only attractive to adults but also to children, making it ideal to impress the whole family.

In-store Marketing

Customized Advertisement

- PUDU Business Management Platform offers the flexibility to customize the content presented on the ad display.
- The ad playlist can be easily generated, with customer-defined frequency and the sequence of the ads.



Smart Trays Detection

Seamless Delivery

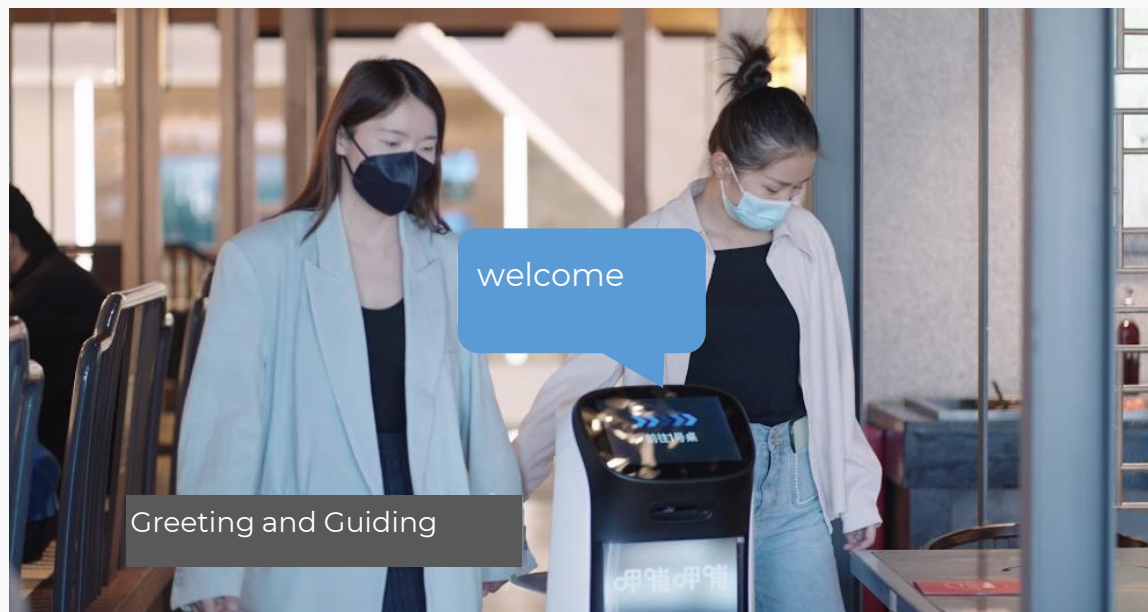
- The KettyBot Pro is equipped with 360° fisheye lenses, that enable the robot to autonomously detect the status of the load.
- The KettyBot Pro can autonomously detect when the load has been completely emptied, allowing it to seamlessly move on to its next task.
- With smart trays sensing, businesses can optimize their delivery processes and improve overall customer satisfaction.



Diverse Human-robot Interaction

Greeting & Guiding

- The rear cover of KettyBot Pro features a minimalist, streamlined design that makes it more compact.
- With autonomous path planning, the robot can guide customers to their tables in the optimal path, providing improved customer experience and reducing waiter workload.



Progressive Interaction Scheme



Long distance Attracting attention

Advertising screen
Attraction techniques
Expression change

Long distance

KettyBot Pro draws the attention of the customers coming and going through advertising screen, body movements, broadcast words, cute expression changes and arouses the interest of customers

Medium distance Initiating interactive requests

Dynamic human following
Proactive greeting
Poster pop-ups

Medium distance

With advertising screen , dynamic human follow, pop-up marketing posters and active greeting, KettyBot Pro further initiates interactive requests, prompting customers to walk towards the robot

Short distance Starting a conversation

Voice dialogue
Proactive attraction

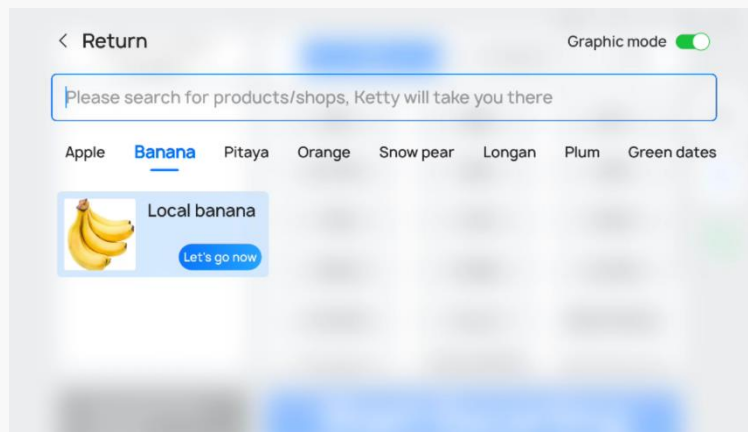
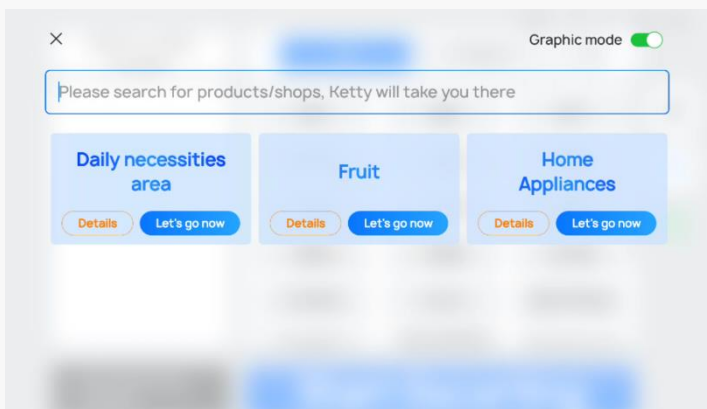
Short distance

When customer approach to KettyBot Pro, it automatically wakes up the screen and actively conducts voice dialogues with customers and guides them into the store, improving the success rate of customers attraction and the possibility of customers entering the store



Multiple Work Modes

New Guiding Mode: Search & Guide

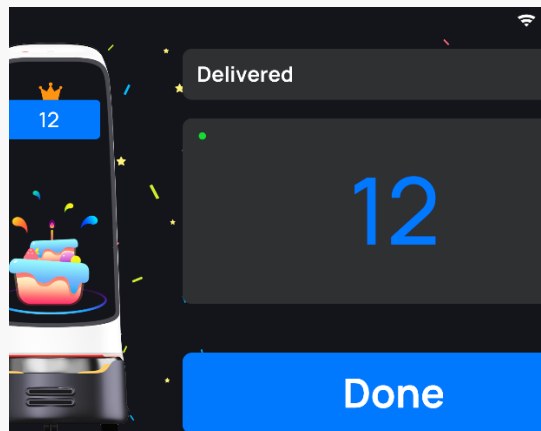


By searching words or clicking pictures, customers may look for the items or the store location they need, then KettyBot Pro will guide them to pick up point or stores.

Multiple Work Modes

Multi-table Delivery

Multiple tables can be served in one run with accurate positioning and optimal path planning.



Birthday Mode

KettyBot Pro can deliver birthday cakes and sing birthday song, giving customers a strong sense of happiness and satisfaction.

Cruise Mode

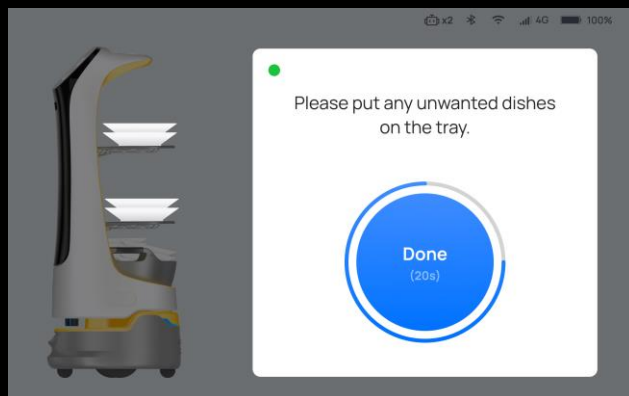
KettyBot Pro can cruise in specific areas to provide customers with free snacks, drinks and promotional flyers.



Multiple Work Modes

Dish Return

KettyBot Pro collects dishes from different tables and delivers them to the dish-return corner or the dish-washing room.



Auto Return

For dining scenarios, KettyBot Pro will go to each dining table that is set to auto dish-returned, and move to the dish-return corner after completing its task.



Air Motion

Upon arrival of the delivery, wave at the top camera to complete the delivery



Easy Operation

Quick Button

Upon arrival of the delivery, click on the top button of the machine to complete the delivery task

Stabilized Delivery



- Upgraded automobile-level adaptive suspension with latest shock absorbing technology, greatly improves the stability of the robot's delivery, and supports the robot to deliver dishes with food decor, porridge, soups and drinks while reducing spills.
- KettyBot Pro can deliver more varieties of meals and beverage.

Ultra-long battery life

Ultra-long battery life for all-day-long service.

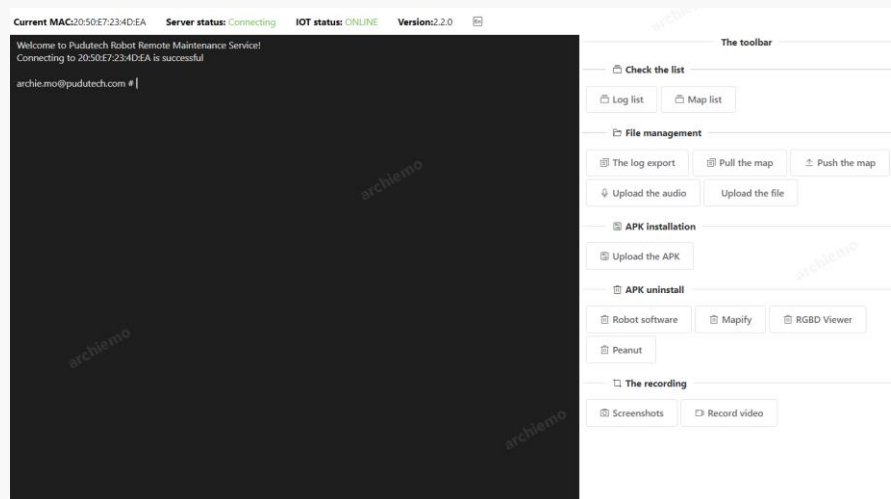
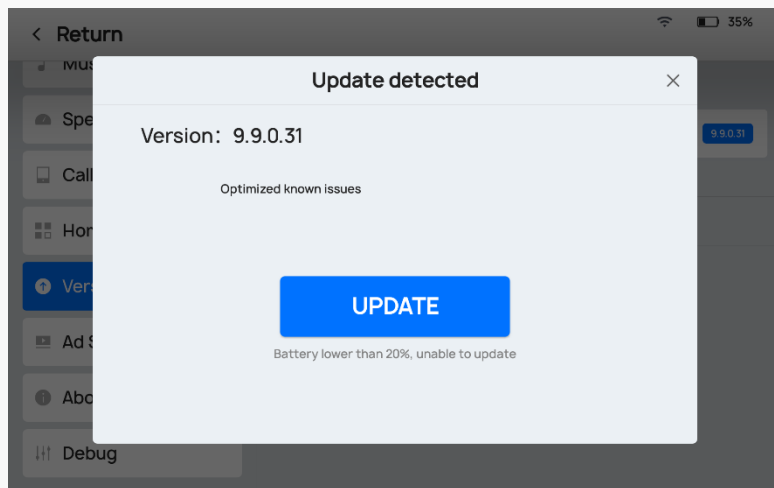
- Battery Capacity: 25Ah
- Run-time: 11H
- Automatic Recharging: KettyBot Pro automatically provides a voice alert and UI notification when the battery is low, and returns to the docking station* simultaneously.

*The docking station needs to be purchased additionally.





Easy Maintenance



- Remote Upgradation Supportive, Users can quickly obtain software updates to instantly improve robots ' performance.
- Intelligent Fault Analysis and Trouble-shooting, Cloud Management and Maintenance, make us can quickly respond to customer problems and solve them, and provide after-sales service remotely

Reduce maintenance time, Improve efficiency, Reduce maintenance costs

A Versatile All-rounder

Two Forms for Greater Versatility

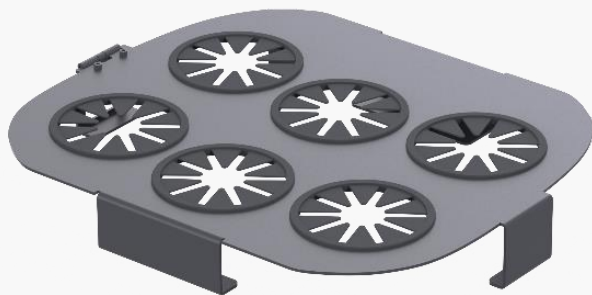
KettyBot Pro features two forms enabled by the removable trays and rear cover*. Customers may select the form of robot based on needs.

*The rear cover is an optional accessory.





Versatile Forms, Various Accessories



Fixed Cup Holder



Spill-proof Cup Holder



*Accessories need to purchase separately



Versatile Forms, Various Accessories



Display Stand



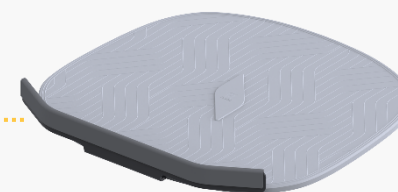
Protection Case

*Accessories need to purchase separately

Versatile Forms, Various Accessories



Charging Station



Up to 10cm extension

Retractable Tray Baffle

*Accessories need to purchase separately



CONTENT

Product Introduction

Company Introduction

Case Study

Customer Value

Pudu Robotics

Pudu Robotics, a [global leader in the service robotics sector](#), is dedicated to enhancing human productivity and living standards through innovative robot technology.

With a focus on R&D, manufacturing, and sales of service robots, PUDU emphasizes three core technologies: [mobility, manipulation, and artificial intelligence](#). PUDU has taken the lead in establishing a comprehensive range of [specialized, semi-humanoid, and humanoid robotic products](#) in the industry.

Currently, PUDU offers three product lines: [service delivery robots, commercial cleaning robots, and industrial delivery robots](#), which are deployed across ten major industries, including food and beverage, retail, hospitality, healthcare, entertainment and sports, industrial facilities, education, and more. To date, PUDU has successfully shipped [over 90,000 units](#) to a variety of markets, with a presence in [more than 60 countries and regions worldwide](#).



Global Sales Network

Sales Network

Pudu Robotics is exploring the global markets rapidly and currently with the coverage of over 60 countries and 600 cities worldwide. We are on the way to explore and deliver more to the future!





Media Coverage

stuff life & style

Robot waiter helps ease staff shortages in busy Northland restaurant

Denise Piper · 14:32, Jan 14 2022



©2022 NEWSGROUP

Vikas Sharma, owner of Green's Thai Cuisine in Pahiia, explains how the BellaBot is used in the restaurant to take pressure off busy staff.

Wait staff run off their feet this summer due to worker shortages are getting an extra hand of the non-human kind.

A robotic waiter, BellaBot, is helping by delivering meals from the kitchen to tables, then running dirty dishes back to the kitchen.

At Pahiia restaurant Green's Thai Cuisine, the BellaBot means wait staff can spend an average of 11 to 12 minutes longer at each table, owner Vikas Sharma said.

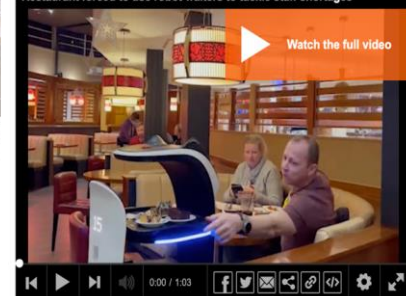


This added an extra strain on the already short waiting staff, according to owners Paolo Hu and Peter Wu, who said the BellaBots had already proved popular with diners.

The guide price for the friendly-faced robots is \$20,000 (£14,500), which is less than the cost of employing a waiter at minimum wage for 40 hours per week.

Quirky footage shows Bella, who features a wide-eyed feline face, sweeping across the restaurant floor dishing out delicacies to delighted customers.

Restaurant forced to use robot waiters to tackle staff shortages



CGTN Europe

Could robots fill the UK's service industry staff shortages?

Customer Data in London

Share

CGTN

CGTN

CGTN

CGTN

CGTN

CGTN

CGTN

CGTN

CGTN

CGTN

CGTN

CGTN

CGTN

CGTN

CGTN

CGTN

CGTN

CGTN

CGTN

CGTN

CGTN

CGTN

CGTN

CGTN

CGTN

CGTN

CGTN

CGTN

CGTN

CGTN

CGTN

CGTN

CGTN

CGTN

CGTN

CGTN

CGTN

CGTN

CGTN

CGTN

CGTN

CGTN

CGTN

CGTN

CGTN

CGTN

CGTN

CGTN

CGTN

CGTN

CGTN

CGTN

CGTN

CGTN

CGTN

CGTN

CGTN

CGTN

CGTN

CGTN

CGTN

CGTN

CGTN

CGTN

CGTN

CGTN

CGTN

CGTN

CGTN

CGTN

CGTN

RESTAURANTS + BARS

Madison Heights restaurant uses a robot to deliver food to tables

Melody Baetens
The Detroit News

Published 12:51 p.m. ET Aug. 16, 2021 | Updated 9:28 a.m. ET Aug. 18, 2021

View Comments

A Chinese noodle restaurant in Madison Heights may be the first in the area to employ the BellaBot, a robotic cart with a digital cartoon cat face that rolls food from the kitchen to the customers' tables.

Noodle Topia on John R is known for its house-made, hand-pulled noodle dishes, dumplings and Chinese tea drinks. The casual eatery has gained some non-human assistance in the form of BellaBot, which has four trays for carrying food (no arms) and has a precise



Image: ABC Radio Hobart

First robot waiter in Tasmania glides into service

On Your Afternoon with Helen Shield

Share

Download 4.23 MB

There are definitely echoes of The Jetsons at one Japanese restaurant in Hobart!

The state's first robot waiter glides from the kitchen to each table, serving meals from a tray on its back.

Harry He is a software engineer who loves new technology, and when he first came across the robot waiter online (this model is called Kero), he saw it as a great contactless service solution for Tasmania. Harry formed Tas-Robots, and suggested his friend Tony, who runs Kirakira Japanese, might like to add one to his floor staff. Press play for lunch with a side of the latest technology.



Cooperation

80%

The market share of Top 100 restaurant clients

40,000+ Deployed Store



m&m's

Coca-Cola



海底捞



鼎泰豐

Denny's



DUNKIN'



Catering Partners

Walmart

accenture



万豪酒店

Hilton Garden Inn

MediaMarkt



Royal Dutch Airlines



Sheraton

TOTTUS



orange



Shell

FOUR SEASONS
HOTEL
PUDONG SHANGHAI

JouéClub!
La meilleure façon de jouer



Carrefour

Panasonic



Hilton



TOPGOLF

Non-Catering Partners

KONE



Qualcomm



TEXAS
INSTRUMENTS

Amphenol



life.augmented

سابك
sabic

Software and Hardware Partners



CONTENT

Product Introduction

Company Introduction

Case Study

Customer Value

Case Study

Da Grasso in Poland

As famous Polish local pizza restaurant chain, originated in 1996, Da Grasso has expanded over the past 25 years and now has almost 200 outlets in 140 cities across Poland. The brand's philosophy is "Delicious pizza, family atmosphere and great service", and the brand is very open to introduce new technologies.

The brand has introduced KettyBot in selected stores since Q1 2022. The branding director said the main reasons for choosing KettyBot include KettyBot's marketing function and passibility in narrow-aisle, which allows for flexible movement and display of the restaurant's marketing activities. In addition to this, KettyBot may distribute menu and deliver food inside the restaurant. KettyBot also promotes the vibe for restaurant guests to celebrate their birthdays. After the introduction of KettyBot, the restaurant's reputation among the young customers has been significantly improved.



Case Study

Café De Coral in Hongkong, China

Café de Coral Group is one of Asia's largest publicly-listed restaurant and catering groups. With deep roots in Hong Kong, the Group has established its position as a market leader in the fast food industry over the past 50 years. KettyBots serve in multiple branches and they mainly function in delivering food, returning dishes and promoting.



Case Study





Case Study

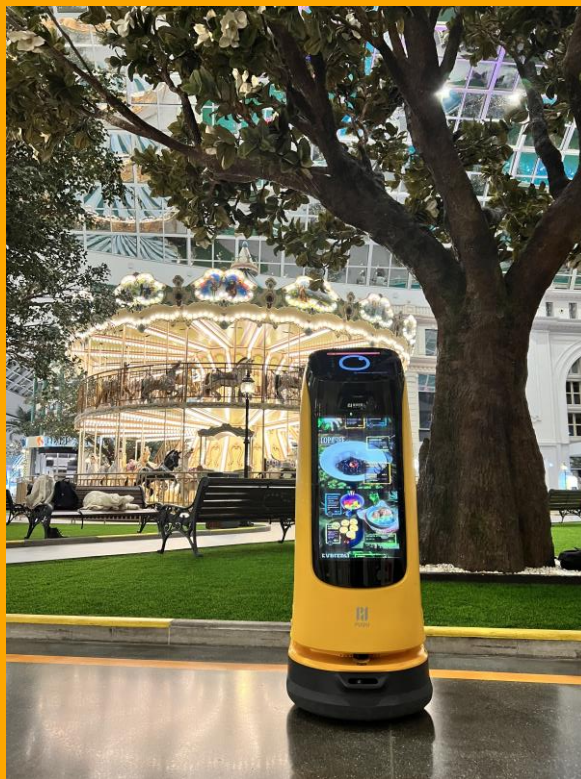


Case Study





Case Study





CONTENT

Product Introduction

Company Introduction

Case Study

Customer Value

Customer Value



A differentiated experience to attract more customers

KettyBot Pro redefines customer experience with an eye-catching way to attract customers and a smart, thoughtful way to serve them.

A novel approach for in-store marketing

KettyBot Pro allows your marketing campaigns and special offers to reach more customers, delivering a higher conversion.





Customer Value

Robot-human collaboration to improve service and efficiency

Human workers collaborate with KettyBot Pro in a way that they can both do what they are best at.

KettyBot Pro is ready to assist and improve humankind working experience.



Manpower shortage is no longer a problem

Multiple delivery mode can well assist stores in completing tasks such as food delivery , and delivering snacks, which will free up human workers from dull and duplicate tasks.

Customer Value



One robot for multiple needs

As a multitasker ,KettyBot Pro can perform several tasks -- marketing, delivering, guiding at the same time, assisting from front-end to back-end, meeting the propaganda and delivery needs of restaurants, cafes, bars, barbecue shops, hotels, hospital etc.


Unified management & IoT platform

Users can manage different models of Pudu robots simultaneously and analyze the operation of the robots through Pudu management platform.






Thank you!

 +86 755-86952935

 Global_sales@pudutech.com

 11/F, Building 2A, Shenzhen International Inno Valley Phase 1, Dashi 1st Road, Nanshan District, Shenzhen, China 518300